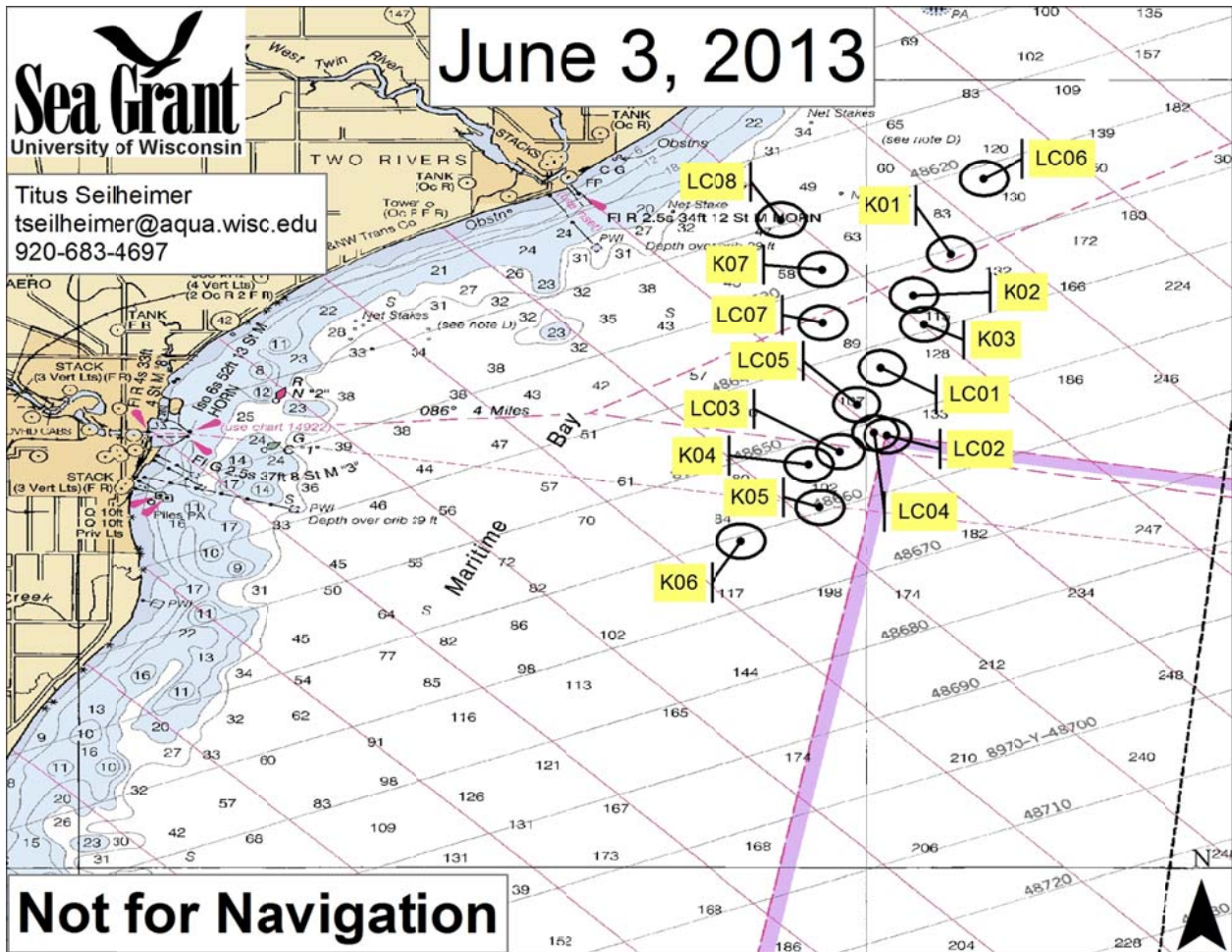




June 3, 2013

Titus Seilheimer  
tseilheimer@aqu.wisc.edu  
920-683-4697



Coordinates for buoys w/ water depths available at [http://bit.ly/Trap\\_Net\\_Coordinates](http://bit.ly/Trap_Net_Coordinates)

**LeClair Nets**

LC01	44 06.339 N 87 29.817 W	LC02	44 05.480 N 87 29.742 W	LC03	44 05.280 N 87 30.353 W
LC04	44 05.518 N 87 29.899 W	LC05	44 05.875 N 87 30.137 W	LC06	44 08.736 N 87 28.522 W
LC07	44 06.909 N 87 30.570 W	LC08	44 08.213 N 87 31.090 W		

**Kulpa Nets**

K01	44 07.782 N 87 28.935 W	K02	44 07.260 N 87 29.405 W	K03	44 06.888 N 87 29.276 W
K04	44 05.115 N 87 30.744 W	K05	44 04.569 N 87 30.607 W	K06	44 04.143 N 87 31.594 W
K07	44 07.586 N 87 30.572 W				